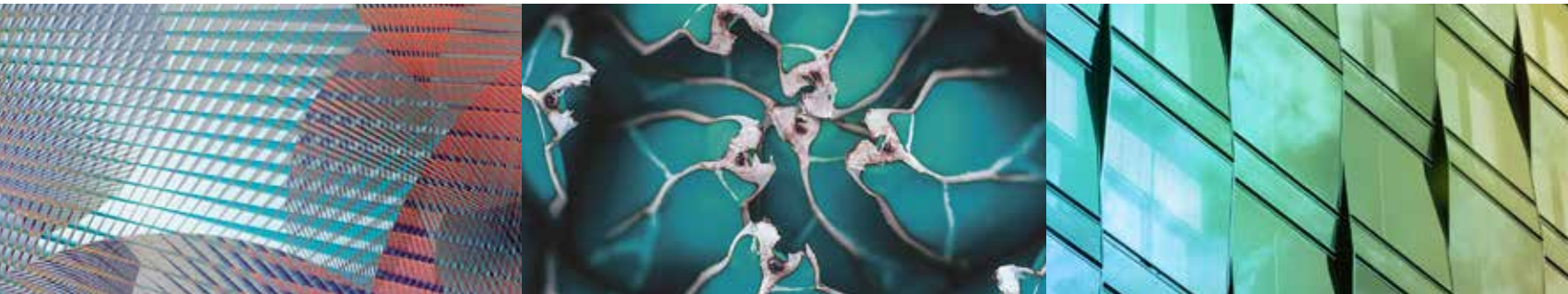


BESPOKE FLOORING

by Forbo



creating better environments

forbo
FLOORING SYSTEMS



MAKING SPACES INTO **UNIQUE** PLACES

For the ultimate unique finish to your interior, our bespoke design floor covering options open up a world of design opportunity that puts you in control of the whole process.

From recreating logos that make an impact in entrances, to printing images, intricate cut out motifs or even creating your very own floor coverings, we can guide you through the whole process.

Bespoke floor coverings by Forbo can be split into two categories.

B | BESPOKE PRODUCT

U | UNIQUE DESIGN (*using standard products*)



REFERENCES:

1. White Marmot Restaurant St. Moritz – Flotex Vision
2. Fabscrap
3. Duddell's Restaurant, London. Photography by Ed Reeve – Precision hand-cut Marmoleum
4. Novi Tech Campus – Eternal Digital Print

MAKING SPACES INTO **INDIVIDUAL** PLACES

By combining our award winning products with industry leading technology, we are able to create truly bespoke floor coverings for our customers. Whether it's a certain image, design or company logo, Forbo can help make your vision a reality, with our bespoke product design service.

B | BESPOKE PRODUCT

marmoleum® aquajet	6 – 7
flotex® vision	8 – 9
eternal digital print	10 – 11
surestep® digital print	10 – 11
fabscrap	12 – 13
nuway® + coral® logo	14 – 15
tessera® bespoke	14 – 15

REFERENCES:

1. Estonian National History Museum – Eternal Digital Print





LAGERABA

TURBASAMMAL





KALVERSTRAAT
AMSTERDAM

EXTRA
BELASTING



BETAAL
f 100.-

LEIDSCHES-
TRAAT
AMSTERDAM

f 350.-

STATION
"OOST"



f 200.-

MAKING SPACES INTO **CO₂ NEUTRAL** PLACES

marmoleum® aquajet

A natural winner! Marmoleum is created from 97% natural raw materials, is phthalate free and the weighted average of our Marmoleum product range is also CO₂ neutral (cradle to gate) – without offsetting. Aquajet water cutting technology makes it possible to reproduce the most intricate designs using Marmoleum and allows for endless creativity.



REFERENCES:

1. Advertising Agency, Holland
2. William Morris Gallery
3. Graaf Engelbrecht, Breda
4. Leeds City Museum



MAKING SPACES INTO **SMART** PLACES

flotex® vision

With a smooth, velour like surface that looks and feels like a carpet, Flotex is the perfect textile substrate for vibrant designs and true to life visuals which can be produced in high level photographic resolution.

Flotex flocked flooring is the only textile floor covering to be awarded the prestigious Allergy UK Seal of Approval™.



2



3



4

REFERENCES:

1. Ibis Styles Hotel @ David Machet
2. Primus, Estonia
3. Osaka International Airport
4. Beza Projekt



19
25

MAKING SPACES INTO **IMMERSIVE** PLACES

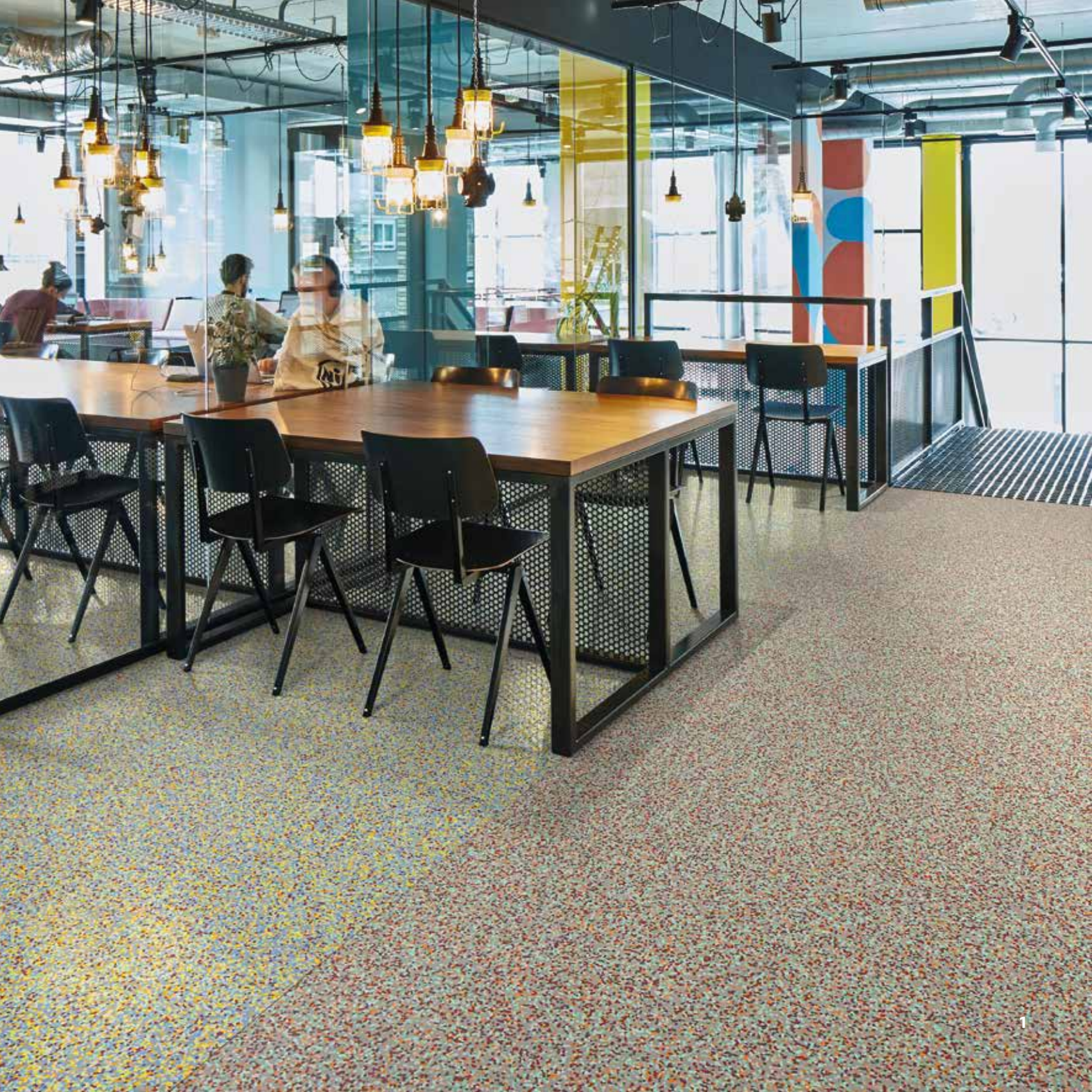
eternal digital print **surestep**® digital print

Graphics, photographic images, in fact any design you like can be printed on our Eternal general purpose vinyl and Step safety vinyls, whilst still retaining product performance.



REFERENCES:

1. 1925 Restaurant by The Building Consultancy, Ireland
2. Clapham Manor School
3. Glenelg Primary School
4. Manchester Science Project



MAKING SPACES INTO **ONE-OFF** PLACES

fabscrap

Fabscrap is a homogeneous vinyl floor covering that is created by using the excess granules from our Sphera production runs.

The granules are re-used in a random mix that is processed into a unique, colourful and near zero emission floor covering.



2



3



4

REFERENCES:

1. Fabscrap mid neutral grey + china blue
2. Fabscrap white
3. Fabscrap white + mid neutral grey + china blue
4. Fabscrap china blue

To find out more about the
Fabscrap production process visit
www.forbo-flooring.co.uk/fabscrap



HOTEL
SUITES
AMMONITE
AMSTERDAM



MAKING SPACES INTO **PERSONALISED** PLACES

nuway® **coral® logo**

Add character to any building with bespoke print and cut-out entrance systems.



REFERENCES:

1. Ammonite Hotel – Coral Logo
2. Waterford Regional Hospital – Nuway
3. Blush – Coral Logo
4. Whitewater – Nuway

For more information or to book a free Bespoke Design Appointment, **please contact your local Forbo Business Area Manager.**

MAKING SPACES INTO **TAILORED** PLACES

Not all bespoke environments are created with bespoke products. Through imaginative floor design and fitting techniques, standard Forbo products can be tailored to create unique spaces which offer reduced lead times and costs, in comparison to Forbo's bespoke products.

U | UNIQUE DESIGN

Hand-cut Marmoleum	18 – 19
Precision cut Marmoleum	20 – 21
Planks	22 – 23

REFERENCES:

1. Duddell's Restaurant, London. Photography by Ed Reeve – Precision hand-cut Marmoleum







MAKING SPACES INTO INDIVIDUALLY DESIGNED PLACES

HAND-CUT MARMOLEUM DESIGN

Decorative flooring is an accessible and effective way to create an individual look. Forbo Marmoleum flooring offers more than 300 colours to choose from, from colourful marbles to subtle concretes. Explore your endless design possibilities!



2



3



4

REFERENCES:

- 1-2. Deliveroo Offices, hand-cut Marmoleum
- 3. Duddell's Restaurant, London. Photography by Ed Reeve – Precision hand-cut Marmoleum
- 4. Simon Retail Store



MAKING SPACES INTO **INSPIRING** PLACES

PRECISION-CUT DESIGN

A Forbo national distributor, J De Bruyn offers a precision plain tile cutting service on tile sizes ranging from 50mm to 900mm. They also offer an intricate design cutting service. Each design or border is cut into individual pieces and hand assembled into panels/borders for easier installation.



REFERENCES:

1. RD102 panels with RDB211 border, 20mm lacing and 10mm lacing
2. RD101-70mm panels with RDB205 borders and corner
3. RD116 panels with RDB208 border and 20mm lacing
4. RD108 (assembly N/A)

For your local supplier and installer:

Tel: 020 8558 4725

Email: enquiries@de-bruyn.co.uk



MAKING SPACES INTO **CREATIVE** PLACES

PLANKS

Planks can bring the wow factor to any environment. Whether you are looking to create a modern twist on herringbone or to design a connected space, combining multiple colours and textures. With planks by Forbo, anything is possible.



REFERENCES:

1. Zebra Technologies – Tessera Carpet Tile Planks
2. Get Response Office – Marmoleum Modular
3. Philip Morris Sabanaci – Allura LVT
4. Konig & Neurath Amsterdam – Flotex Planks



PLAN DESIGN SERVICE

Our in-house design team at Forbo can help bring your ideas to life with their free Plan Design Service. Whether you are taking inspiration from one particular product which needs to be carried through the plan, or whether you simply need to see your scheme in the flesh, we can create plan boards of your design complete with product samples.



REFERENCES:

Photography: Matthias Groppe, Paderborn

For more information or to book a free Plan Design Appointment, **please contact your local Forbo Business Area Manager.**

IMPORTANT INFORMATION

BESPOKE DESIGN (made-to-order*)

Product	Min order size	Quotation	Design creation	Production	Delivery	Total lead time (approx)	File type/ requirements	Resolution
Aquajet Cut Design**	N/A	2 days	5 days	4 weeks	4 days	6 weeks	JPG, PNG, GIF, DWG, DXF, EPS, SVG	1:1 – 150 dpi
Vinyl Digital Printing	12 m ²	1 day	10 days	4 weeks	4 days	7 weeks	JPG, PDF, TIF, EPS	1:1 – 72-120 dpi
Coral Printed Design	N/A	2 days	3 days	3 weeks	4 days	5 weeks	JPG, EPS, AI, DWG, DXF, TIF, BMP	1:1 – 150 dpi
Flotex Bespoke Printed Design	60 m ²	1 day	10 days	3 weeks	10 days	7 weeks	CAD Drawing, Physical Sample, TIF, EPS, AI, DWG, DXF, JPG, BMP	1:1 – 150 dpi
Flotex Vision (recolour of standard designs)	60 m ²	1 day	10 days	2 weeks	10 days	6 weeks	TIF, EPS, AI, DWG, DXF, JPG, BMP	1:1 – 150 dpi
Flotex Cut Design†	Sheet: 4 m ² Tile: 3 m ²	1 day	10 days	2 weeks	10 days	6 weeks	EPS, AI, DWG, DXF, JPG, TIF, BMP	1:1 – 150 dpi
Nuway Tuftiguard Cut Design	N/A	2 days	2 days	Dependent on detail in the design			JPG, PDF, TIF, CAD Drawing, PNG	1:1 – 150 dpi
Nuway Grid Cut Design	N/A	2 days	2 days	Dependent on detail in the design			JPG, PDF, TIF, CAD Drawing, PNG	1:1 – 150 dpi

*Made-to-order

** The following products can be cut using the Aquajet Process; Allura, Allura Flex, Marmoleum sheet, Colorex, (except plus), Saron, Sphera and Eternal. Aquajet will not give a straight cut for some products that have particles in the wear layer – i.e. Step safety vinyl.

† Flotex Colour/Linear sheet & tile only. Excludes digitally printed designs..

Please Note: -

All lead-times are subject to the complexity and size of the design or project and may be subject to change. Production lead times start from a signed confirmation and acceptance of the design artwork and receipt of an official purchase order. Complicated or large designs may also require additional quotation lead-time.

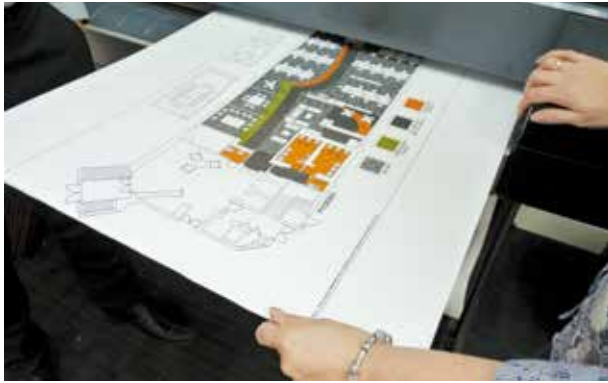
Dependent on design and fitting specification there may be instances whereby wastage naturally occurs due to the printing / manufacturing process which may affect overall m² price – we will advise of full costs as part of the quotation process.

Designs should be clean and free of any comments on the original design drawing. If comments are required, a separate copy of the design should accompany the original file to highlight special requirements.

Forbo is unable to provide an in-house design support service and therefore design concepts will be managed through an external design agency. Please note that any design that requires additional digital or design intervention may be subject to additional design costs. Files should be sent in high resolution file format where applicable. Printing products may require Pantone/RAL or NCS references to be provided and additional charges may apply. When a font type is used in a design, please clearly identify what font type is to be used e.g. Calibri (Body). If a non-standard font is used, the customer is required to provide the required font.

Full specifications are available upon request by emailing info.bespokedesign.uk@forbo.com

WHAT **NEXT** ?



BESPOKE DESIGN/ PLAN DESIGN SERVICE

For more information or to book a free Bespoke Design/Plan Design Appointment, **please contact your local Forbo Business Area Manager or email info.bespokedesign.uk@forbo.com**



VISIT OUR WEBSITE

To see more examples of bespoke products and installations please visit **www.forbo-flooring.co.uk/inspiration**



FOLLOW FORBO ON SOCIAL MEDIA

f @forboflooringsystemsuk
t @forboflooringuk
p pinterest.co.uk/forboflooring
in linkedin.com/company/forbo
y youtube.com/forboglobal
i instagram.com/forboflooringuk

Forbo Flooring Systems is part of the Forbo Group, a global leader in flooring and movement systems, and offers a full range of flooring products for commercial and affordable housing and new build markets. High quality linoleum, vinyl, textile, flocked and entrance flooring products combine functionality, colour and design, offering total flooring solutions for any environment.

UK

Forbo Flooring UK Limited
High Holborn Road, Ripley
Derbyshire DE5 3NT

London EC1 showroom

79 St John Street, Clerkenwell
London EC1M 4NR
Tel: 0207 553 9300

For commercial enquiries:

If calling from the North,
London & South East
Tel: 0800 0282 162
bcs.flooring.uk@forbo.com

If calling from Scotland,
Midlands & South West
Tel: 0800 0935 258
kcs.flooring.uk@forbo.com

Nuway enquiries:

Tel: 01773 740 688

Samples:

Tel: 0800 731 2369

Email:

samples.uk@forbo.com

Find us on



Ireland

Forbo Ireland Ltd
2 Deansgrange Business Park
Blackrock, Co Dublin

Tel: 00353 1 2898 898

Fax: 00353 1 2898 177

Email: info.ireland@forbo.com
www.forbo-flooring.ie

Registered office:

Forbo Flooring UK Limited
High Holborn Road
Ripley, Derbyshire DE5 3NT
Registered in England 9200318

